

PROPERTIES

Full Grain

European Bovine Hides

Thickness - 1 / 1.2 mm

Hides size - 42-55 sqft

Full Grain

Dry Cycle - 500c

Wet Cycle - 250c

Physical Properties

Flexible Endurance - > 50,000 cycles

Finish Adhesion - > = 2

Tear strength - > 20

Burning behaviour

Cold cracking - 15c


Flamability Properties


Complies to


EN1021 - 1/2 (Furniture)


DIN75200 (Furniture)

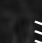
LEATHER CARE


 Avoid placing leather in direct sun

 Keep the leather away from direct heat

 Dust regularly with soft & dry cloth

 Clean spots with damp cloth & mild soap

 Dry immediately after the treatment

 Do not rub. use a circular motion towards the centre of the stain

BAB LEATHER PRODUCTS INTL

FACTORY

BAB Leather #162 & 163, SIDCO Industrial Estate, Thirumudivakkam, Chennai - 600044, Tamil Nadu, India.

CHENNAI

#43, AMICI building, Kasturi Rangan Road, Alwarpet, Chennai - 600018, Tamil Nadu, India.

HYDERABAD

SVS Tower, 3rd Floor, 8-2-293/82/ L/294 A, Road No. 92, MLA Colony, Banjara Hills, Hyderabad - 500034, Telangana, India.

www.bab1945.com

BAB
LEATHER
Since 1945

VINTAGE

VINTAGE

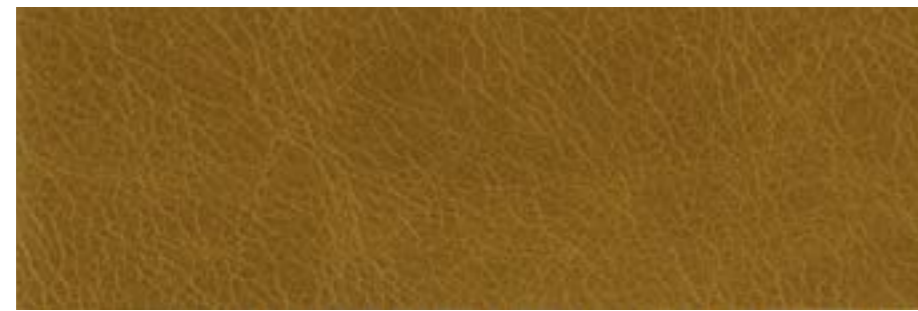


Vintage

Vintage is one of the highest quality leather, full grain that has aged to a beautiful burnish patina. It has a 1-1.2mm thickness with a bovine finish. Due to the unique imperfection in the leather, it is impossible to artificially recreate the same print. Its surface immitates ageing to give the vintage finish.



VI01



VI02



VI03



VI04



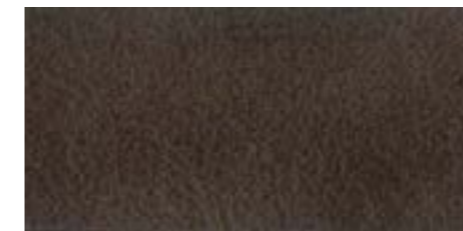
VI05



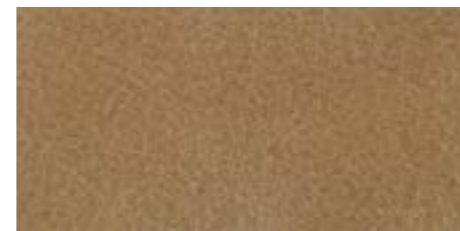
VI06



VI07



VI08



VI09



VI010



VI11



VI12



VI13



VI14



VI15



VI16



VI17



VI18



VI19



VI20

